



SCOTTON PARISH PLAN

2026— 2028

TABLE OF CONTENTS

1. INTRODUCTION

- 1.1. What is Scotton Parish Council's plan?
- 1.2. Why have we created Scotton Parish Plan?
- 1.3. Community involvement
- 1.4. Monitoring Scotton Parish Plan
- 1.5. Getting in touch

2. SCOTTON PARISH COUNCIL

- 2.1 What are Parish and Town Councils?
- 2.2 Parish Council Employees
- 2.3 Financial Information
- 2.4 Governance
 - 2.4.1 Scotton Parish Councillors

3. SCOTTON PARISH COUNCIL OBJECTIVES

4. FINANCIAL OBJECTIVES

5. COMMITMENT PROGRESS

1.1. What is Scotton Parish Council's Plan?

Scotton Parish Council's plan sets out our view over the next few years. The Plan will explain the Parish Council's key objectives and priorities to help promote a thriving Parish and a great place to live. The Plan will also demonstrate to residents how we intend to spend Scotton Parish Council's precept so they can have full confidence that every pound is making a difference to the local community.

1.2. Why have we created Scotton Parish Plan?

We believe Scotton Parish Council should demonstrate openness and accountability to you, the residents. We are acting on your behalf and through feedback to Scotton Parish through our meetings and social media pages. Financial cut backs has meant more powers have been transferred from what was Richmondshire District Council and now North Yorkshire Council. As a result, we are receiving greater responsibilities for local services and we need to ensure our priorities match those of our residents. With shrinking budgets and increasing pressures on local services, it is imperative that that we plan wisely for the future. The Parish Plan helps us to prepare for future events and ensures we can be proactive rather than reactive. It will allow us to devise and budget for long term objectives that will help to shape an even better local community.

1.3. Community Involvement.

You, the community, are central to the Parish Plan. We have done, and will continue to do, the following to better understand your concerns and ideas for the local area:

- The public are welcome to attend and express their views at the monthly Parish Council meetings which are usually held on the evenings of the 1st Monday of each calendar month except for August, in the evening. Dates can be found on the website and noticeboards.
- The Parish Council has representatives from the residential areas around Scotton.
- The Parish Council continues to look for and encourage new representatives.
- The Parish Council did create working groups for future projects, for local residents to participate. Scotton Parish Council had introduced an Opens Spaces committee and Village Hall committee, but due to a shortage of Cllrs it has been combined as the Village Hall and outdoor spaces committee. This new committee will be held after the Monthly meeting. This will allow the Monthly meeting to be more efficient and give the dedicated time to all projects.
- The Parish Council holds an Annual General Meeting in May when we explain progress over the last year and receive feedback from residents.
- Parish Councillors follow many social and media forums to better understand the issues that are relevant to the local community. They have now updated their website in line with government recommendations to a .gov website, along with their email and Facebook page.
- The minutes from the monthly meetings and agendas are put on the noticeboards and on the website and this is done monthly. Draft minutes are put on the website before the 30 days.
- We maintain our own website and Facebook pages where we post details of our events and activities.
- Scotton Parish Council have been delivering newsletters to get more involvement with the community and advising the residents of consultations that are going on within Scotton.
- We have established a Summer Fair and produce show and have been delighted to see many residents entering the competitions and coming to see what is going on.

1.4. Monitoring Scotton Parish Plan.

The Parish Plan is intended to be a fluid document. We will update the Parish Plan when needed. Updates from the committees will help us to identify new projects when needed and ensure good financial management is maintained.

1.5. Getting in touch.

If you have any comments about Scotton Parish Plan, then please direct these enquiries to Lorraine Hodgson the Parish Clerk.

Email: clerk@scotton-pc.gov.uk Address: Village Hall, Hawthorne Ave, Scotton DL9 3NE

Website: Scotton-pc.gov.uk

2. SCOTTON PARISH COUNCIL

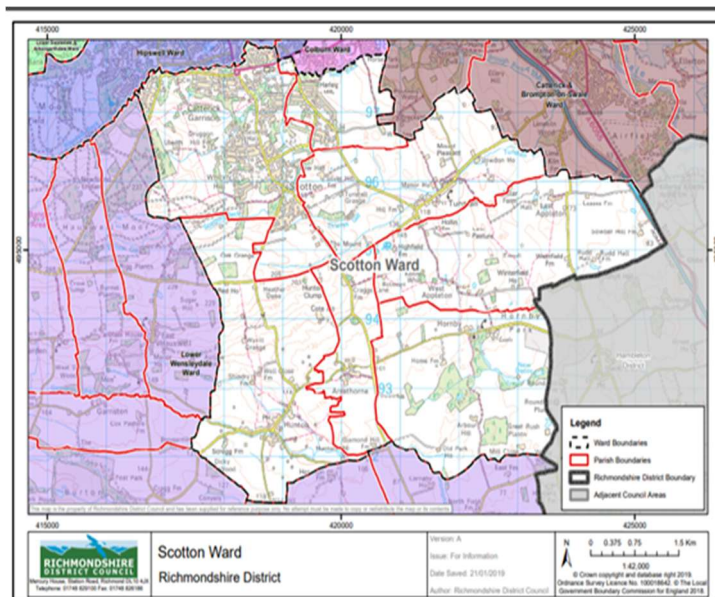
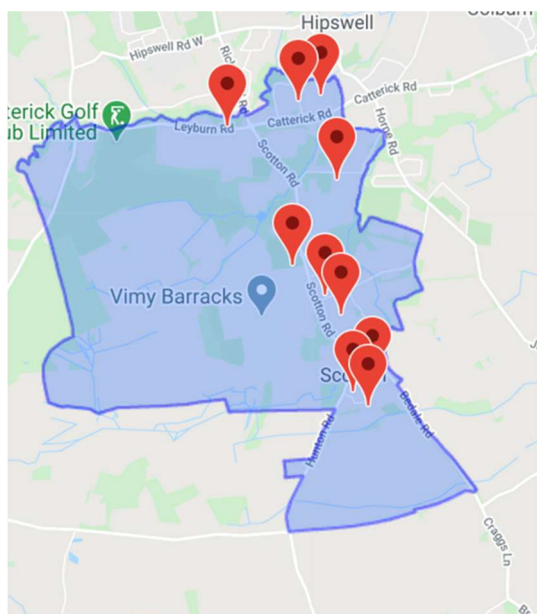
2.1. What are Parish or Town Councils?

Parish or Town Councils are the first tier of government and have a central role in developing and strengthening local communities. Parish and Town Councils have powers and responsibilities for a range of local services. Here are some examples:

- Allotments
- Village Halls
- Burial Grounds
- Car Parks which belong to the Parish
- Parish land and Open Spaces
- Footpaths
- Leisure and Sporting Activities
- Litter, Grit, Dog waste Bins
- Public Toilets
- Planning
- Area Cleaning
- Play parks
- Tree Maintenance
- Grass cuts and hedge cuts

The above list is not definitive of all activities undertaken by Parish and Town Councils and also does not demonstrate what is actually undertaken by each. Central government is also encouraging local people to take control of their own lives and have a bigger say about what happens in their communities. As a result of this policy, there could be more powers handed down from North Yorkshire Council or Central Government in the years ahead. The responsibilities of Parish and Town Councils will vary depending on their locality, facilities owned and requirements of the local community.

The Scotton Parish stretches from Bedale Road/Hunton Road down to Vicarage Road at the white shops and also incorporates Leyburn road past the golf course to Ava Road.



Scotton Parish can elect 9 councillors in total. Councillors can also be co-opted on to the parish council throughout the time between elections. We actively encourage anyone who wishes to be involved in the local community to contact us or come along to a meeting. Scotton have three Councillor vacancies in January 2026

The Ward of Scotton boundary was extended in 2019 for election purposes for District Councillors. This was changed again for the unitary authority and is now in part of lower Wensleydale and not part of Catterick Garrison. Scotton Parish Council now only have one North Yorkshire Councillor to represent them in the new North Yorkshire Council, there used to be two District Councillors and one NYCC representative. North Yorkshire Council are currently undergoing a boundary review and the amount of Cllrs to represent NYC is going down by one to 89. This will mean the Boundaries will all change and the area for some NY Councillors will be larger.

2.2 Parish Council Employees.

We employ a parish clerk for 12 hours a week who is the Responsible Financial Officer, and a Caretaker, who works 4 hours a week, for the Scotton Village Hall. During the last couple of years and with the new unitary authority the work load has increased.

2.3 Financial Information.

In January 2026 Scotton Parish has 1699 electors and 1185 properties.

The Precept is £56,000, this was increased over recent years because of investment in parks, an increase in the clerks hours and other maintenance responsibilities. Further investment in community facilities is planned and the parish have some money already saved for this. The uplifted precept will provide further funding for play park development. Our financial records can be seen on the website and are published in monthly meeting minutes.

Scotton Parish Council Village Hall

Scotton built the Village Hall in 1981. The residents of Scotton wanted a community space for activities in Scotton. The Village Hall receives income for room hire it but this is priced to make it accessible for local people. It has been subsidised by the Parish for this reason.

Grant requests that have been successful include:

- Multi use Games Area (MUGA) in Hawthorn Ave Park
- Oaktree Avenue Play Park
- Phases 1 & 2 of the new footpaths on Hunton Road for the safety of School children
- New footpath at the village hall for disabled
- Replacement of part of the footpath up to Oaktree Ave from the Village Hall
- New kitchen in the village hall to replace the 30 year old one
- Two new pieces of play park equipment to Scotton Gardens
- New disabled toilet in the village hall
- New picnic benches
- Community benches to link up to the Garrison and other Parishes
- Third phase of Hunton footpath
- Mallard play park, new equipment
- Falcon Close play park new equipment
- Scotton Gardens new play equipment
- New access made to enable another toilet, with decoration and new lino
- 20k Awards For All for the development of Hawthorne Park 2024—2025

And many other items for the hall including dishes, utensils and the defibrillator were all grant funded.

2.4 Governance

Scotton Parish ensures that all our activities are closely monitored and delivered to the highest standards. The Parish Council has adopted a number of policies to demonstrate our commitment to ensuring openness, transparency and overall good governance. We follow Local Government guidelines from the National Association of Local Councils (NALC) and are members of The Yorkshire Local Councils Association (YLCA) which provide us with up to date policy and procedure. Full copies of our various policies are available from our website.

2.4.1 Scotton Parish Councillors (as at Jan 2026):

Chairman: Cllr Ian Whitehead, email: cldr.I.Whitehead@scotton-pc.gov.uk

Vice Chair: Cllr Emma Fulton email: cldr.E.Fulton@scotton-pc.gov.uk

Cllr Angie Dale, email: cldr.a.dale@scotton-pc.gov.uk

Cllr Gemma Paley ,email: cldr.g.paley@scotton-pc.gov.uk

Cllr Huw Bennett, email: cldr.h.bennett@scotton-pc.gov.uk

Cllr Julie Greensmith, email: cldr.j.greensmith@scotton-pc.gov.uk

3. Scotton Parish Council Objectives

The Parish Council had the following plans for 2024-2026. These were not set in stone but were the commitments we prioritised at that time.

We took over the play parks previously owned by Richmondshire District Council and some of the equipment in the parks was near the end of life. The parks include Scotton Gardens, Meanee park, Falcon close, Oak tree and Mallard. Hawthorne belonged to Scotton.

Scotton Parish Council would like to change Meanee play park into a quiet area with some raised beds and benches and remove the play equipment. This is because they would like to develop Hawthorne play park as this is the largest park and has the benefit of the Village Hall in-front of it. Hawthorne park is just across the Road from Meanee play park and two parks so close, are very expensive to keep updating.

Since taking over the 5 play parks and maintaining Hawthorne, it has become expensive due to the fact that the Parish need to pay increased costs to get the play park inspected and equipment fixed.

The Parish, through grants, have managed to get the Wetpour changed in some of the parks and have added matting which does not shrink and is easier to dispose of and change when needed. There is a large amount of Wetpour in Meanee and we have had quotes of 9k just to remove it.

We have gone into consultation regarding changing Meanee park and having some phased work done in Hawthorne. Our vision is to see a multipurpose state of the art large out door space for all age groups to use. We would like to see the zip wire reinstated, new swings and a pod fit which will enable groups to do some gym work outs. We have already purchased a basket swing which is ideal for all abilities. We would like to upgrade the MUGA area as this is used a lot. This would have to be another phase as it is very expensive to do. We have looked at all our parks in Scotton and have selected play equipment which would enhance all our play parks. *The first phase of Hawthorne park has now been completed with a £20k awards for all and money the Parish have been saving. We reinstated the Zip wire, mother and toddler swing, cone climber and installed a fit pod for all abilities and put two new football/rugby posts, this cost £41K. This has been a huge success and has seen lots more children use the area. (this already has increased the usage and is the main park in Scotton)*

Hawthorne park is situated behind the Village Hall and has parking. The hall could be used for scouts and groups which would also enjoy our new park equipment, while using the Village Hall.

We would also like to extend the Village Hall parking. We have had feedback that the parking needs to be bigger to support more people hiring it. We would like to make more disabled parking spaces

We have secured energy efficient lighting already for the Village hall but would like to look at future proofing it. We would like solar panels, more efficient boiler and insulation installed. This is all a cost and so will need to look at grants for the work. We would also like to upgrade the double glazing.

We have regular users of the hall including Pilates several times a week, indoor bowls, sewing class and yoga.

The hall is used for voting in all elections and meets all the criteria for this purpose.

4. Financial objectives for 2026-2028 and onwards

- To change Meanee park into a open space
- To continue to update play park equipment in the five remaining play parks
- To look at phase 2 for Hawthorn park and update the Multi Use Games Area (MUGA) as this I the largest and most used park in Scotton
- Continue the upgrade and replacement of fencing in various areas
- Maintain trees and remove where necessary
- Address the parking at Scotton Village Hall and introduce a disabled parking area and extra spaces
- Look at the Village Hall with a view to making it more energy efficient including grants for solar panels
- To promote and improve community events such as the Christmas Dinner, Summer Fair and Garden Competition using 137 money. (This is money specifically

5. Commitment Progress

The Parish Council thinks it is vital for the local community to understand our commitments and to monitor our performance. We recognise that many people will not have time to read through the whole business plan or to check how it has been updated. We will display this version and any updated versions on our website.

Activity	Reason	Progress	Funding	Status
Road traffic survey	To install solar speed signs to slow traffic on Bedale Road and Hunton road. This will be alternated to each site.	has been costed and 3 quotes received. Still looking into the legal information from NYCC before purchasing. Delayed due to Covid-19.	£3875	2021 purchase. Ongoing This now completed and we are getting really good data from the VAS Sign
Footpath – Hawthorn to Oaktree	top part of the footpath is in a dangerous condition and needs replacing as soon as possible.	and Safety implications. Bottom Cost £3500 so rough budgeting of £5000 for larger top area.	£5000 estimate last year. Quotes required as soon as possible.	Complete by Mar 2021. This completed
Trees & Bushes	cut back and bushes in play parks need large amount of work before March 2021	complaints that border play park. Trees on Hawthorne need serious pruning in the village hall car park	£2000 estimate for large oak tree and large trees in Meanee road play park and Mallard road.	To be completed before March 2021. The crowning needs to be done in Hawthorne but bushes have been pruned in all other parks

Activity	Reason	Progress	Funding	Status
				Two Ash trees have been removed near the Village Hall 2024
Mallard Road play park	install all new equipment since the present is 20 to 30 years old and rotting wood apparatus. This area covers 263 immediate households and 333 further within a 5 to 10 min walk. Boundary fence, toddlers swings and gates need to be replaced	for funding to the Community investment fund in the hope that some funding remains with the Covid-19 delays this year.	x Quotes without VAT for £32,500. Requesting 70%, £22,750 from the fund with the remainder from Parish Council funds.	Oct 20Ongoing. This has been completed. We will need a new swing set in the future, fencing and gates.
Hunton Road footpath	3 of Hunton Road footpath for children's safety for school buses.	needs to be mainly grant funded as it is not a Parish responsibility financially but a necessity. An application also in to Community investment Fund for £21k £3.5 k already funded by Helen NYCC.	£25-£30k from Highways. New quote being supplied.	Application Just approved for £21,000 so work will be underway soon. Work now completed
Meanee Road play-park	park equipment needs replacing. Wooden apparatus rotting and out of the ground. See Saw wood surface rotten. Considering whole new park with possibility of Re using slide and re painting. To look at changing the park into a quiet area with raised beds and seating	would be a larger project after completing Mallard Road park. Depending on the success of the grant this year for Mallard, will then allow us to concentrate on Meanee. Need to see if we need planning permission. To change of use will be about £100 and then we will need to pay (9k to remove equipment plus work on the park.	for grants to the Lottery and other play equipment sources. Any local funding availability?	Temporary repair work Underway Oct 2020Replacement considered in Latter 2021 on to 2022 depending on funding sources.

Activity	Reason	Progress	Funding	Status
		2026 park is closed and waiting to see if we can change the use to a open space		

Scotton Gardens Play Park	Ongoing commitment to replace old equipment. Three new pieces put in 2016-2020 and older items were repainted but larger area to maintain and keep up to date. Equipment was added 2023, new matting, large swing, multipurpose frame and equipment painted. Still need to look at the old wooden plank and balance beam. These will need to be replaced	Possibly two to three more pieces required to update and modernise this park with 20-30 year old equipment replaced. Still need to add and remove equipment. New fence added and dangerous spikey hedges removed 2023 All the wooden equipment needs to be removed as getting to the end of life. Fencing and gates replacing.	CIF grand received from RDC	Started 2021—2022 project started via a grant in 2023
Hawthorne play park	Wooden play items need to be removed and new equipment including a zip wire as most popular. Phase 2, look at the muga and replace the goal posts and introduce more play equipment and a bike track	look and apply for funding to aid all play parks.	Have introduced a play park development of £12K per year and maintenance of 6K for repairs. We have savings of 17K for development and seeking an awards for all.	The first phase of this was completed in Feb 2025 with the help of £20k awards for all

Village Hall	<p>Increase the car park to enable more parking. New disabled car parking. Future proof the Village Hall with new efficient boiler, solar panels and insulation. Re-develop the kitchen so can be used more in catering.</p> <p>Look at making more parking. More efficient double glazing . Adding a small extension to the side for storage.</p> <p>Updating the kitchen</p>		Grants and funding are being looked at.	Project still in early stages
--------------	--	--	---	-------------------------------